

## RULES & PRECAUTIONS

Minimum-impact use of land is in everybody's best interest. To achieve this, we recommend the following guidelines:

- ◆ pack it in/pack it out
- ◆ stay on designated trails
- ◆ leave what you find
- ◆ respect private property
- ◆ use fire responsibly
- ◆ be considerate of fellow trail users

---

Lynch's Woods also offers a 7 1/2 mile mountain bike trail.

Please keep in mind that others enjoy the trail mix, too. You will be sharing the trails with bikers, runners, hikers, equestrians, and others.

## FOR ADDITIONAL INFORMATION

**NEWBERRY COUNTY SOIL & WATER  
CONSERVATION DISTRICT**  
719 Kendall Road  
Newberry, SC 29108  
(803) 291-1978, ext. 3

Trails make our communities healthy and walkable. But we need your help! Please join the effort in South Carolina by visiting [www.palmettoconservation.org](http://www.palmettoconservation.org) and learn how to join PCF.



## LYNCH'S WOODS PASSAGE

**LENGTH:** *Palmetto Trail: 3 miles*

**USE:** *Hiking/Equestrian*

**RESTRICTIONS:** *No motor vehicles*

**DIFFICULTY:** *Moderate*

## D I R E C T I O N S

Take I-26 to Exit 76 (State Route 219) toward Newberry. Turn left onto US Route 76. Go approximately 1 mile and turn left at Lynch's Woods sign next to Ford dealership. Follow the road into the park and follow traffic signs. The kiosk is by the restrooms and picnic shelter.

Newberry High School

219

To Interstate 26

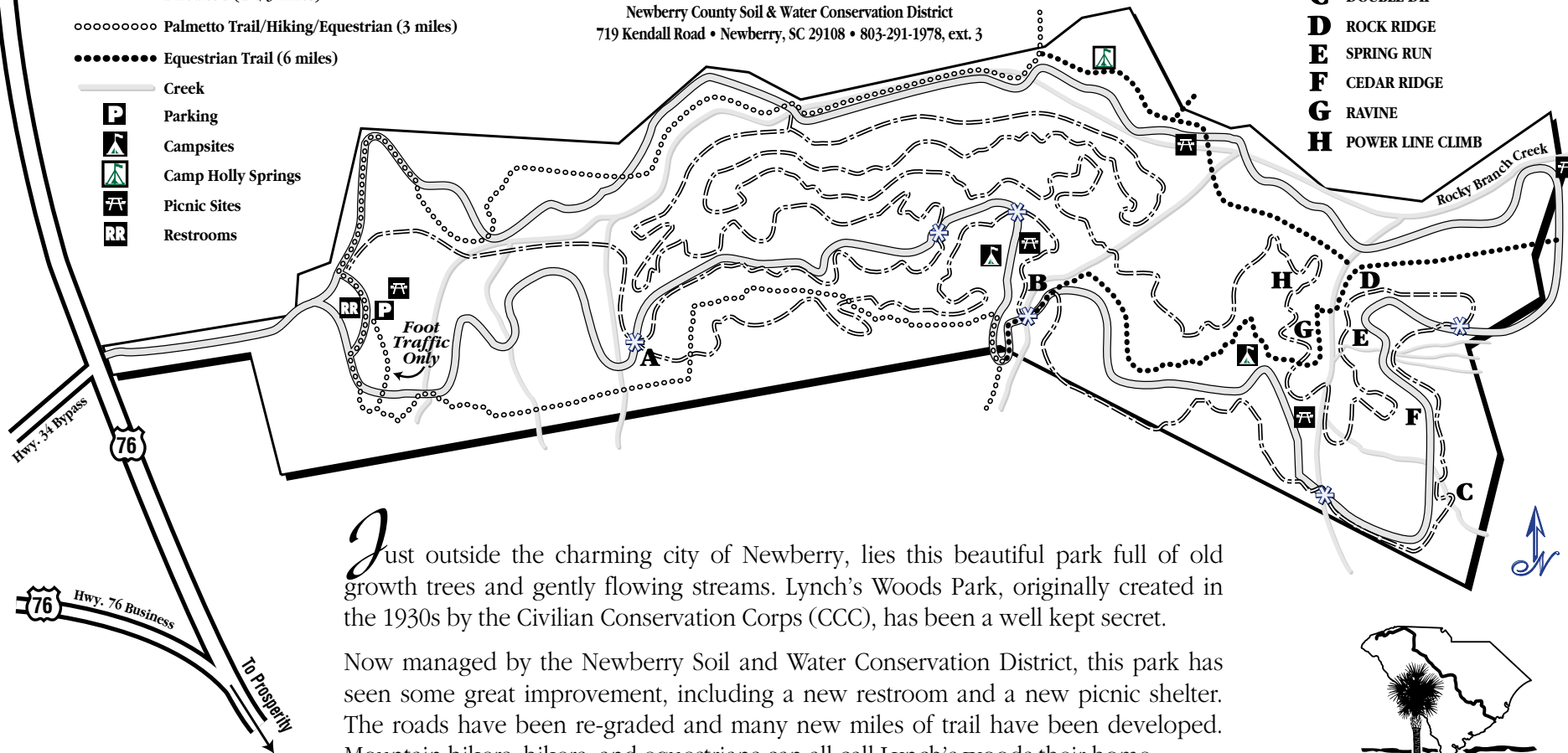
### Legend

- == Mountain Bike/Hiking Trail (7 1/2 miles)
- Dirt Road (4 1/3 miles)
- o-o-o-o-o Palmetto Trail/Hiking/Equestrian (3 miles)
- Equestrian Trail (6 miles)
- Creek
- P** Parking
- A** Campsites
- AS** Camp Holly Springs
- PS** Picnic Sites
- RR** Restrooms

# Lynch's Woods Park

Developed and managed by:  
Newberry County Soil & Water Conservation District  
719 Kendall Road • Newberry, SC 29108 • 803-291-1978, ext. 3

- \*** ROAD CROSSINGS
- A** LOOP ENTRANCE
- B** STEPS
- C** DOUBLE DIP
- D** ROCK RIDGE
- E** SPRING RUN
- F** CEDAR RIDGE
- G** RAVINE
- H** POWER LINE CLIMB



Just outside the charming city of Newberry, lies this beautiful park full of old growth trees and gently flowing streams. Lynch's Woods Park, originally created in the 1930s by the Civilian Conservation Corps (CCC), has been a well kept secret.

Now managed by the Newberry Soil and Water Conservation District, this park has seen some great improvement, including a new restroom and a new picnic shelter. The roads have been re-graded and many new miles of trail have been developed. Mountain bikers, hikers, and equestrians can all call Lynch's woods their home.

Lynch's Woods will act as the "Gateway to the Upstate" for the Palmetto Trail. A chance to rest up, camp, or begin your journey on the trail.

